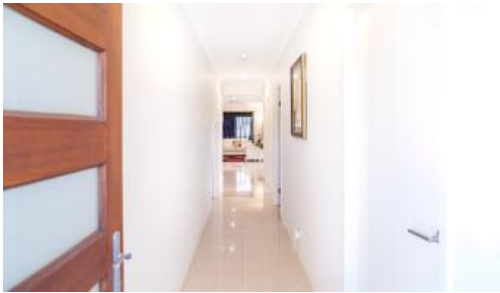


Leased



12 Dent Cres, Burpengary East



CHARMING FAMILY HOME WITH PARK VIEW IN NORTH HARBOUR ESTATE

Don't pass up the opportunity to rent this gorgeous, well-equipped family house. This comfortable property offers comfortable living indoors and out. The home's location, which is situated directly across from a park on a peaceful, family-friendly street, is ideal.

The house has a spacious layout with two living areas that connect to the entertaining area hidden away at the back of the house.

Being located in the highly desired North Harbour Estate, which features waterfront front mountain bike trails and playgrounds, parklands fitted with BBQs, and expansive grassed areas suited for all walks of life, this quality-built residence is guaranteed to please.

Features of the property:

- Media room with formal living room
- Air conditioning in the bedrooms and living room
- Ceiling Fans everywhere

🛏 3 🚿 2 🚿 2 📏 312 m2

Price \$575 per week
Property Type Rental
Property ID 1014
Land Area 312 m2

AGENT DETAILS

Hallie Hill - 0417 819 911

OFFICE DETAILS

Local Property Team
1300 040 728

PROPERTY TEAM

- Large master bedroom with walk-in closet and ensuite
- Three bedrooms with ample space.
- Garage with a double lock
- Completely landscaped gardens
- Generous separate laundry
- Solar Energy
- A yard with a fence.
- Adjacent to a park
- Short drive to Bruce Highway

Click BOOK INSPECTION button now to register for the next inspection

Click APPLY NOW button now to get your pre-approval

Disclaimer - We have in preparing this information used our best endeavors to ensure that the information contained herein is true and accurate but accept no responsibility and disclaim all liability in respect of any errors, omissions, inaccuracies, or misstatements that may occur. Prospective tenants should make their own inquiries and due diligence to verify the information contained herein.

The above information provided has been furnished to us by the vendor/s. We have not verified whether or not that information is accurate and do not have any belief in one way or the other in its accuracy. We do not accept any responsibility to any person for its accuracy and do no more than pass it on. All interested parties should make and rely upon their own inquiries in order to determine whether or not this information is in fact accurate.